

PROJECT READY?  
contact us to get started.

**215.453.5055**



Pharma-grade Quality.  
Personalized Experience.  
Innovative Approach.

  
**ALL STANDARD.**

**The Axcentria Laboratory** can provide method development and method validation protocols to support ANDA, NDA, and INDs in compliance with current FDA and ICH Guidances. We follow current Good Manufacturing Practices (cGMP). We use the latest analytical technologies to test and validate your products for appearance, physical properties, potency of ingredients, and impurities.

**Method Development Services:**

- Identification
- Assay testing
- Impurity determination
- Stability indicating methods
- Moisture
- pH
- Total Organic Carbon
- Oxidative and reductive stress
- Light stressing
- Microbial testing

**Method Validation Services:**

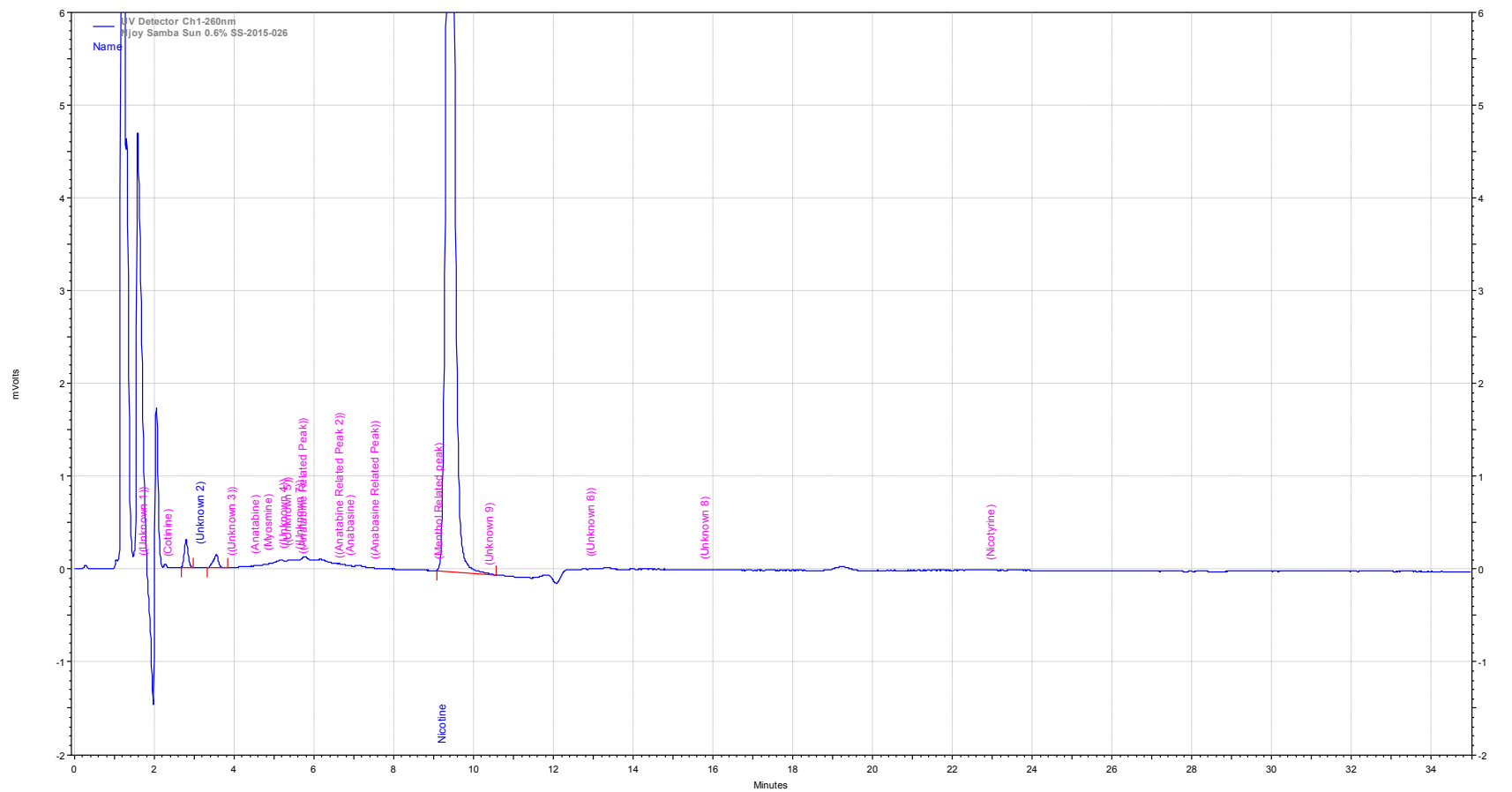
- Accuracy
- Precision Repeatability
- Intermediate precision
- Reproducibility
- Specificity
- Detection limit
- Quantitation limit
- Linearity
- Range
- Robustness
- System Suitability Testing

The following pages provide a sample comparative report. Contact us for assistance when quality matters on your next pharma-grade project.

Comparator Results: <b>Summary of Results</b>		
	<b>Sample Name</b>	<b>Nicotine (%LC)</b>
1	Tropical Fruit	85.3
2	Rum & Coke	84.6
3	Watermelon	82.6
4	Menthol	84.1
5	Lime Punch	85.0



PROJECT READY?  
contact us to get started.

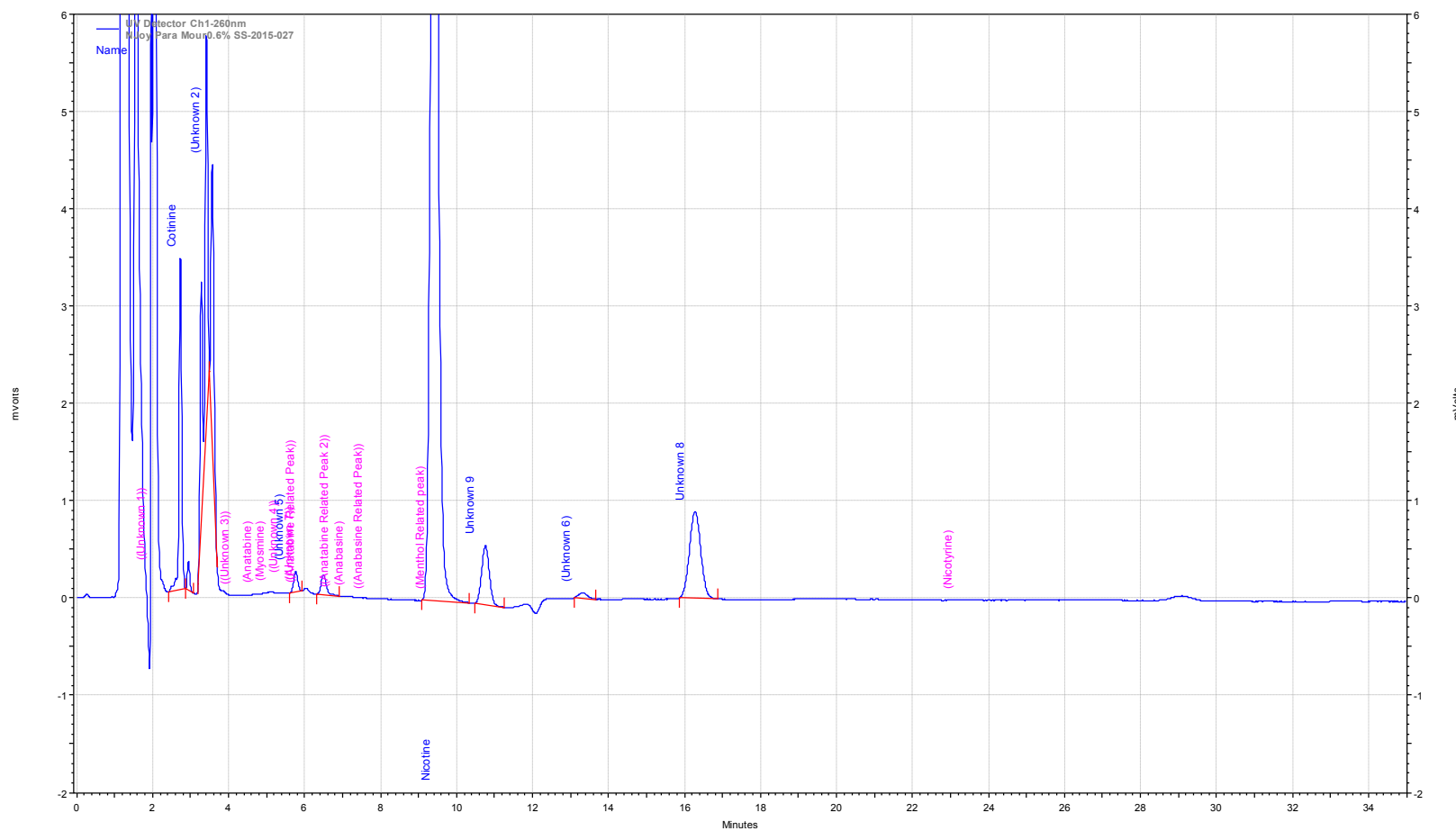


Sample Name	Nicotine (%LC)	Total Area % of Unknowns*	Total Area % of Nicotine Related Impurities
Tropical Fruit	85.3	30.58	6.68

\*Unable to discern peaks associated with flavor and/or additives.



PROJECT READY?  
contact us to get started.

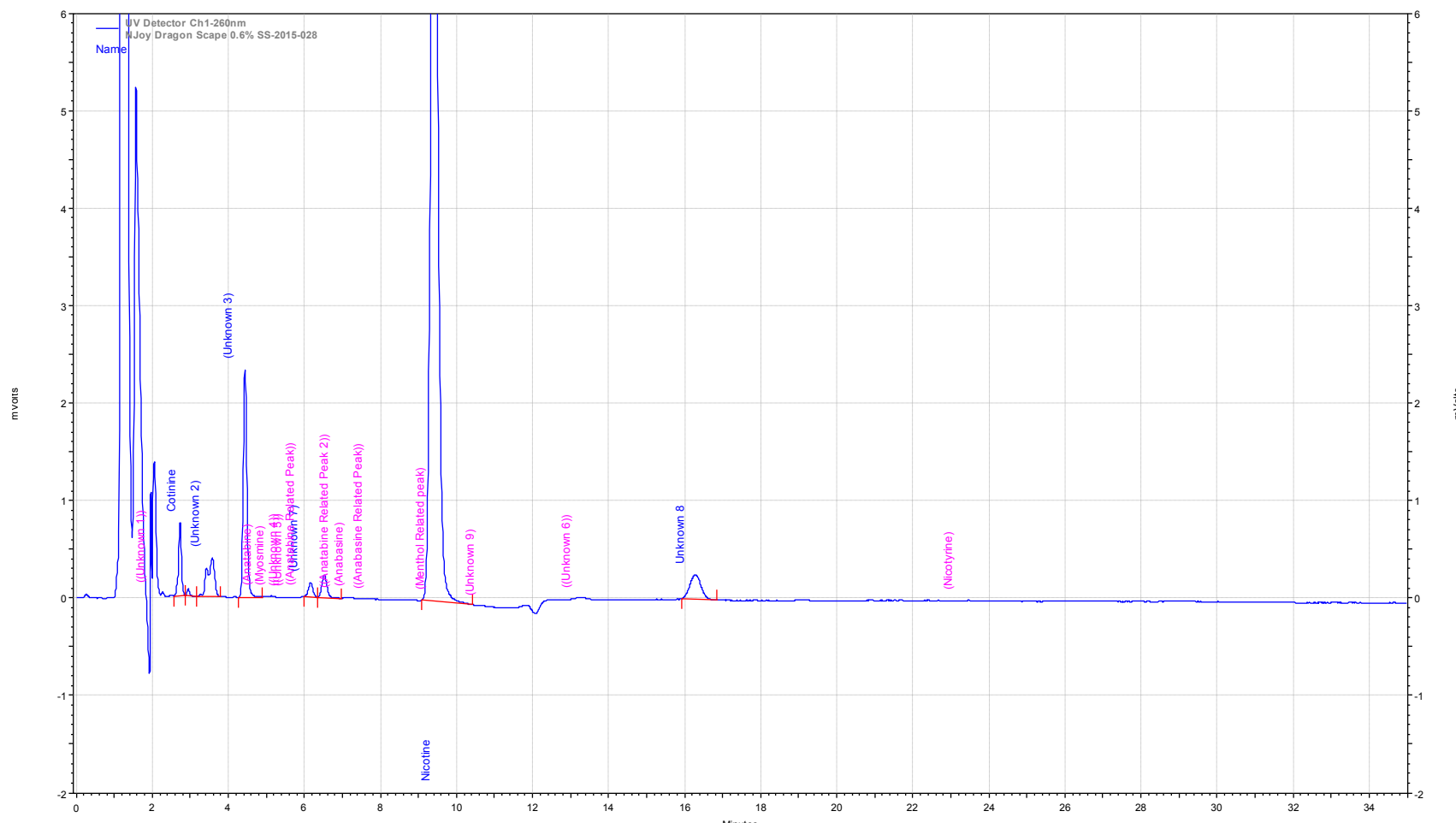


Sample Name	Nicotine (%LC)	Total Area % of Unknowns*	Total Area % of Nicotine Related Impurities
Rum & Coke	84.6	30.58	6.68

\*Unable to discern peaks associated with flavor and/or additives.



PROJECT READY?  
contact us to get started.

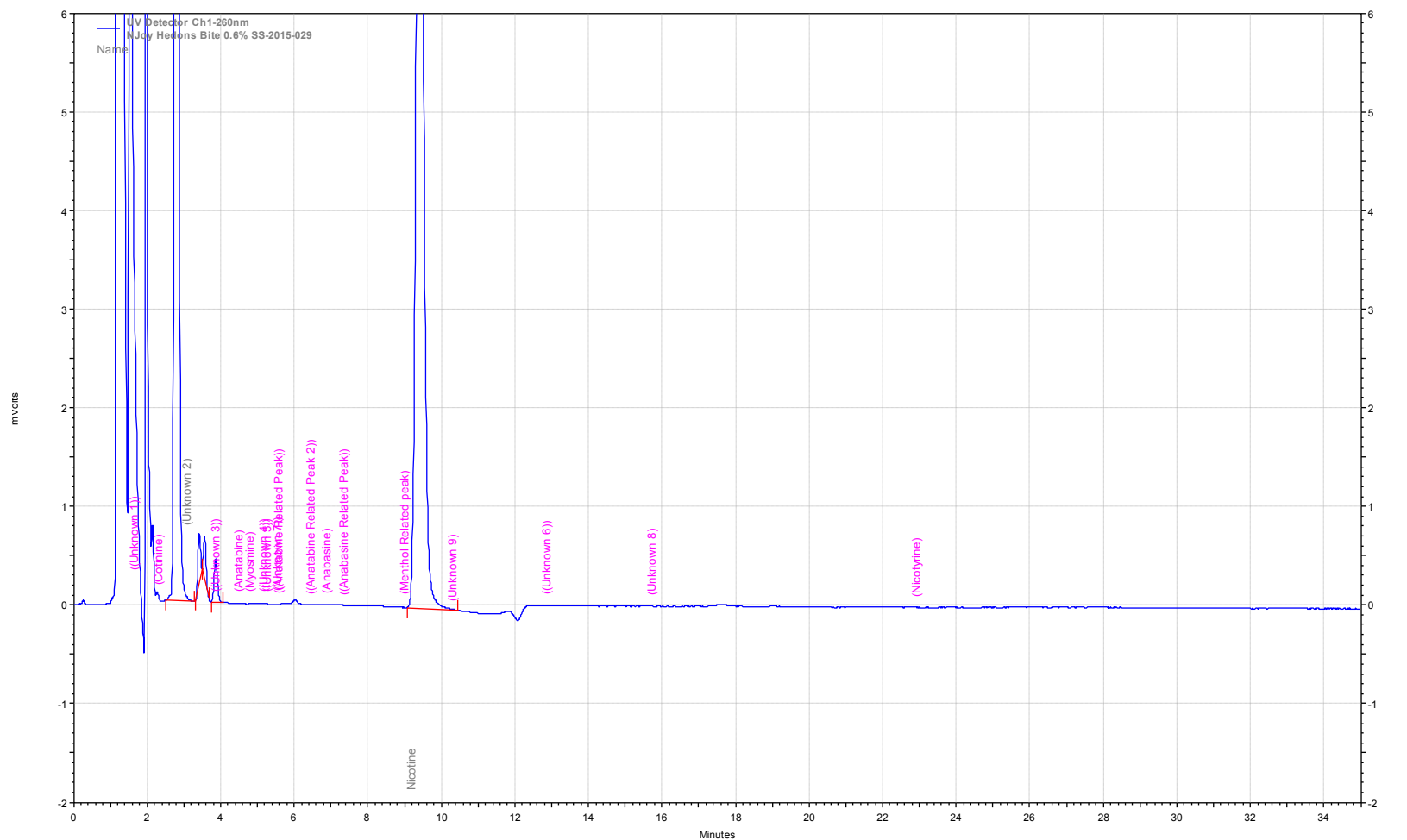


Sample Name	Nicotine (%LC)	Total Area % of Unknowns*	Total Area % of Nicotine Related Impurities
Watermelon	82.6	18.22	2.49

\*Unable to discern peaks associated with flavor and/or additives.



PROJECT READY?  
contact us to get started.

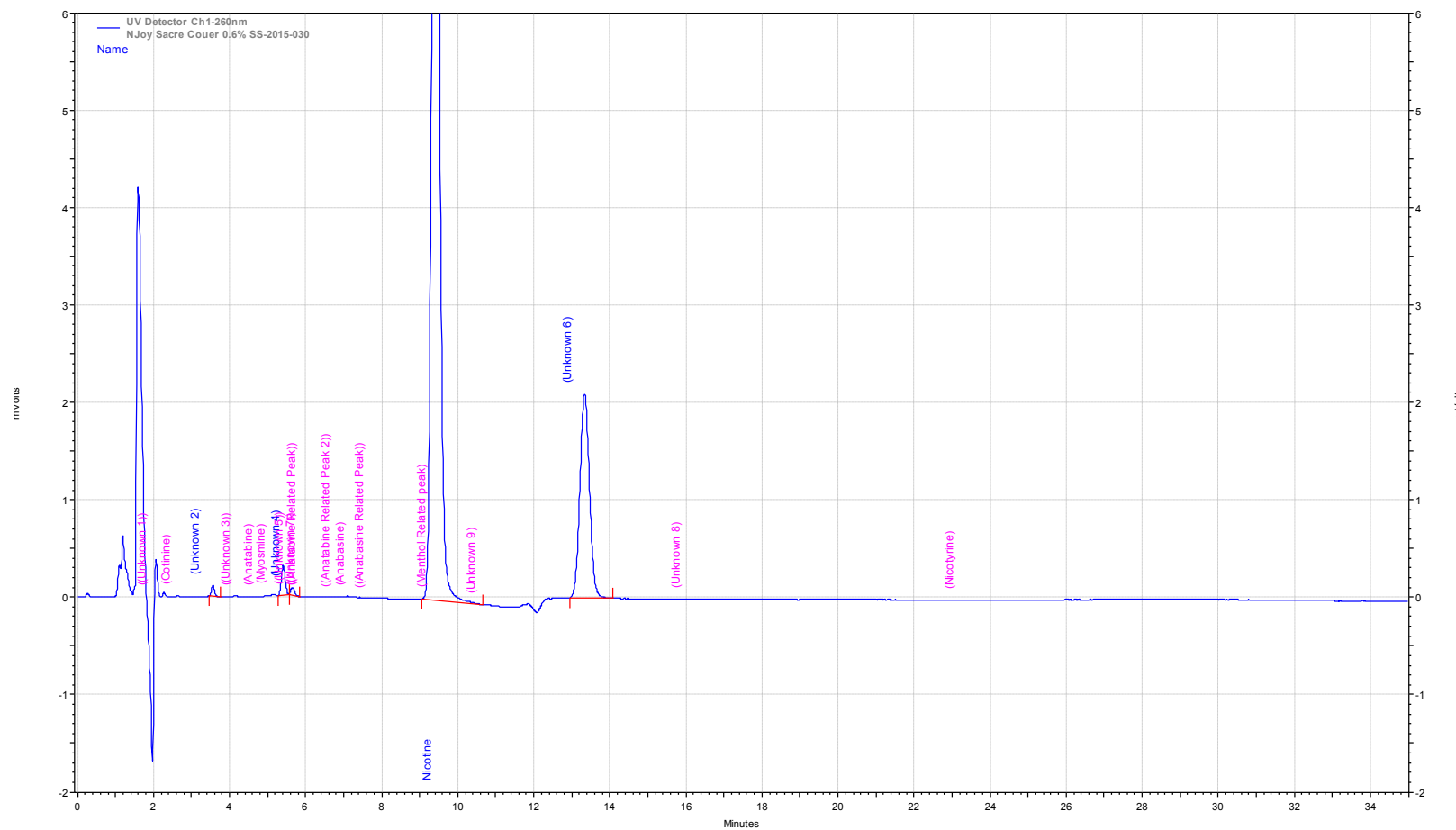


Sample Name	Nicotine (%LC)	Total Area % of Unknowns*	Total Area % of Nicotine Related Impurities
Menthol	84.1	48.36	0.0

\*Unable to discern peaks associated with flavor and/or additives.



PROJECT READY?  
contact us to get started.



Sample Name	Nicotine (%LC)	Total Area % of Unknowns*	Total Area % of Nicotine Related Impurities
Lime Punch	85.0	19.65	0.0

\*Unable to discern peaks associated with flavor and/or additives.

